

A Celebration of Our Year 2020

Catholic Care
A service you can believe in

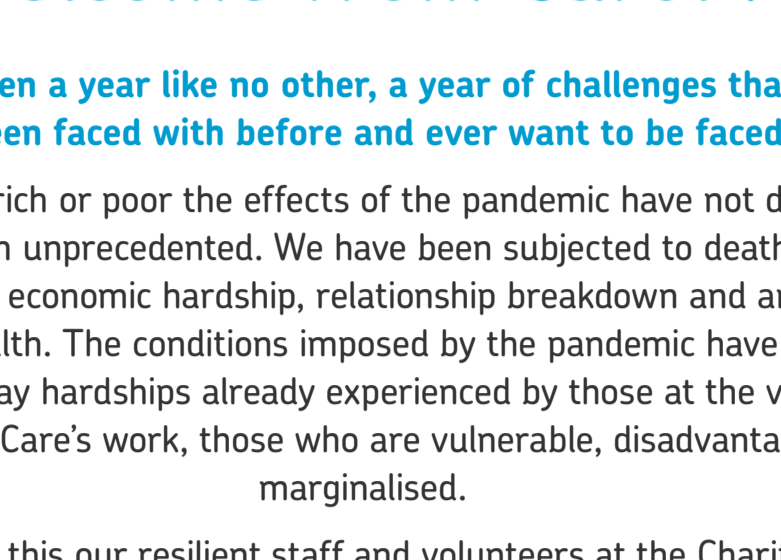
Message from Bishop Marcus

Despite all the phenomenal challenges and restrictions of the last year, the leadership, staff and volunteers of Catholic Care have diligently continued to provide an outstanding range of services and support to people of all ages across our Diocese. I am in awe of what has been achieved.

This review will give you a flavour of the diverse projects that Catholic Care has delivered during this pandemic and the help given to improve the quality of life for so many individuals who would otherwise have been isolated or left in desperate emotional or material need.

Truly, Catholic Care has been not only Christ's hands and feet during this crisis but also an expression of the love of His Most Sacred Heart for all those who are poor, vulnerable, or marginalised. Let us pray that the Lord will continue to bless Catholic Care in the years ahead and protect with his Grace all who support it and benefit from its work.

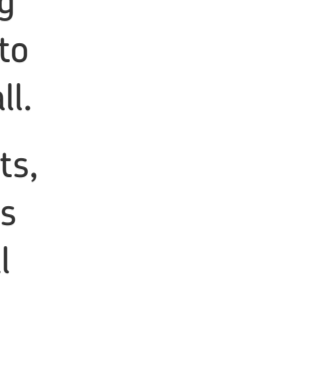
Rt Rev Marcus Stock
Bishop of Leeds



Welcome from Carol Hill

2020 has been a year like no other, a year of challenges that none of us have ever been faced with before and ever want to be faced with again.

Young or old, rich or poor the effects of the pandemic have not discriminated, it has been unprecedented. We have been subjected to death, illness, bereavement, economic hardship, relationship breakdown and an assault on our mental health. The conditions imposed by the pandemic have exacerbated the day to day hardships already experienced by those at the very heart of Catholic Care's work, those who are vulnerable, disadvantaged and marginalised.



Yet despite all this our resilient staff and volunteers at the Charity have risen to the challenges and have gone above and beyond in caring for, supporting and offering help to those in need, even during the severest of lockdown restrictions.

Although some may be offered in a different way, all our services have been maintained throughout the pandemic and more beside. 2020 really demonstrates the importance of our work across the Diocese in supporting children and families, those who are vulnerable, disadvantaged, marginalised and struggling with isolation. We have been true to our mission of taking the caring Church into the community, offering practical help to people of all faiths and of no faith at all.

Our work reaching out to those in need in the Community is dependent on grants, donations, fundraising and volunteers. The prolonged length of the pandemic is having a continued impact on our ability to fundraise and so this year's Annual Appeal is so important to our continued work.

Community Services

Our work in the community has continued to support all who benefit from its services and has reached out further to meet the surge in need

Community Response Service

Before the first lockdown it was evident difficult times were ahead. The Charity responded quickly to assist:

- Families who had been hit economically with redundancy, furlough and reduced hours.
- Families impacted by school closures meaning no free school meals for those entitled.
- Shielding, older people and those isolating.



Thanks to grant funding from the Gubay Foundation and encouraging healthy eating, the Charity undertook a "Fruit for Families" project delivering



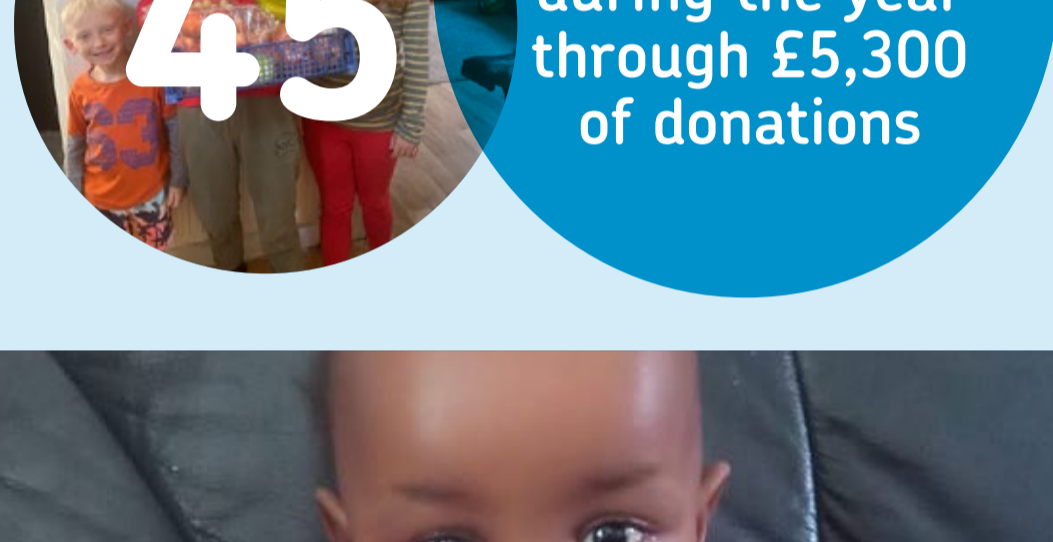
Recognising this economic hardship would have long term impact, in September Catholic Care, working in partnership with FareShare, Neighbourly, Warburtons and local supermarkets, launched 12 community markets, providing staple foods, together with occasional treats, all at low cost or no cost.



Crisis Funding

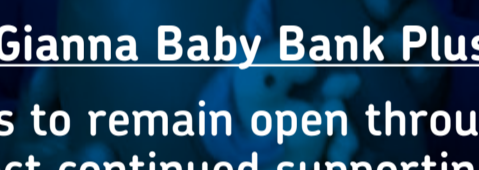
We have supplied:

Fridges, cookers, beds, bedding, mattresses, school uniform, washing machines, mobile phones, fuel and laptops for children.



Gianna Baby Bank Plus

One of the few baby banks to remain open throughout the pandemic in the Bradford area, our project continued supporting new mothers and their babies, many from the refugee and asylum seeking communities and many of whom had been trafficked.



Stay and Play Groups

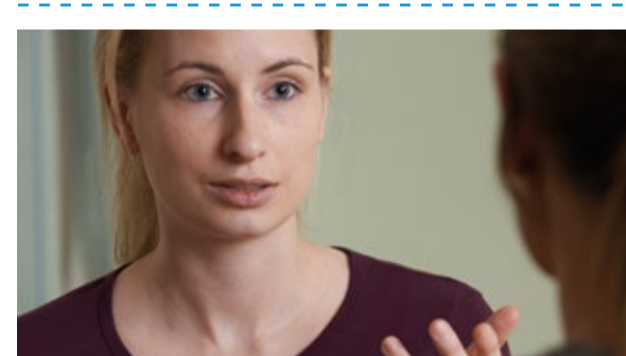
These friendly groups are for parents and carers to socialise and seek support and guidance as required and, of course, for young children to play.

Pre pandemic, these popular groups were attended by 100 families. With COVID this support moved on line where 20 families accessed this support virtually.



Young Carers

Young carers are courageous children and young people under the age of 18 who provide regular ongoing care and/or emotional support to a family member who is physically or mentally ill, disabled, or misuses substances. These young people have suffered greatly during the pandemic with heightened anxiety as the family member they are caring for has often been clinically extremely vulnerable. They have felt more isolated than ever. We have supported throughout with activity or wellbeing packs, setting up peer support groups through social media, garden visits and 1:1 counselling.



Community Counselling

A confidential counselling service for adults in our Catholic Community. It is well publicised that the pandemic is having such a negative impact on mental health.

This is clearly illustrated in the Charity's Community Counselling Service where the number of people supported has increased by over 75% to 46. In addition to this 40 mindfulness sessions have been delivered to 10 people throughout the pandemic.

Support for Asylum Seekers and Refugees

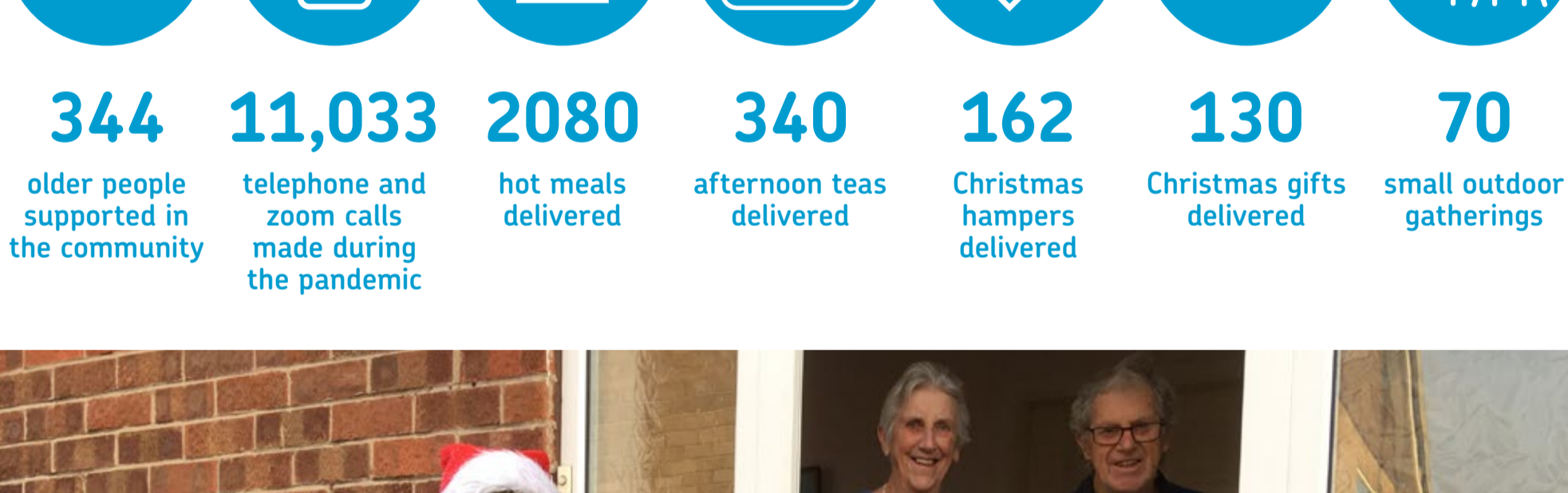
Much of the Charity's direct work is through the Gianna Project. Working in partnership with St. Monica's Housing, the Charity has a house for 4 destitute asylum seeking women in Leeds.

Catholic Care is a Lead Sponsor with the Home Office for the Community Sponsorship Scheme for refugees and is supporting Parishes and their extended communities to welcome a refugee family. The first group was established pre-COVID and in addition there are two groups developing and preparing for when the restrictions are lifted.



Older People's Community Groups

Before the pandemic struck over 300 older people regularly attended a variety of groups including luncheon clubs, exercise classes and friendship groups. Then it all had to stop, but thanks to the ingenuity of the staff the support carried on in a variety of different ways.



"like light into a dark room"

Said an older person on receiving regular telephone calls

Regulated Services

Historically caring for people in our homes and schools has been the mainstay of the Charity. During the pandemic over 140 members of staff have been classed as critical workers and have done amazing work keeping the people we care for and support safe and well.

Children's Residential Care

Our Leeds' residential home provides care for up to 7 teenage males, making a positive difference to their lives.

Schools, Children & Family Wellbeing Service

Our services centre on the needs of children and young people experiencing extreme distress and supports them with their mental health issues. The service also supports families and school staff. We are well placed to support schools with the anticipated fall out of the pandemic in terms of mental health challenges.



Mental Health Accommodation Services

We believe in encouraging and supporting people to become active members of the community and in doing so prevent relapses and future hospital admissions.



Adult Learning Disability Service

At Catholic Care we take a positive approach to caring for those with learning disabilities and focus on an individual's ability and not their disability.

11 homes
51 people cared for

Adult Outreach Services

Our service provides care and support in a person's own home, promoting and maintaining their independence.

7 adults receiving outreach
15 retired clergy

Make a donation

Every donation, however large or small, helps us to continue our work supporting the most vulnerable in society. We are very grateful for your support.

You can make a one-off donation to us quickly and easily online using our PayPal Giving Fund donate page or you can send a cheque made payable to Catholic Care to 11 North Grange Road, Headingley, Leeds, LS6 2BR

www.catholic-care.org.uk/support-us/make-donation/

Contact us

Catholic Care (Diocese of Leeds) 11 North Grange Road, Headingley, Leeds LS6 2BR
Telephone 0113 388 5400 Email info@catholic-care.org.uk
www.catholic-care.org.uk